

# Downtown Johnson & Lamoille Valley Rail Trail Connection Scoping Study

Please join us to share your ideas on how to more meaningfully connect Downtown Johnson to the Lamoille Valley Rail Trail. Your input is vital to the process!

## Local Concerns Meeting

Please join us for our first public meeting! Come out and share your ideas and concerns regarding the future of mobility, safety, and accommodations for trail users and community members between Downtown Johnson and the Lamoille Valley Rail Trail (LVRT).



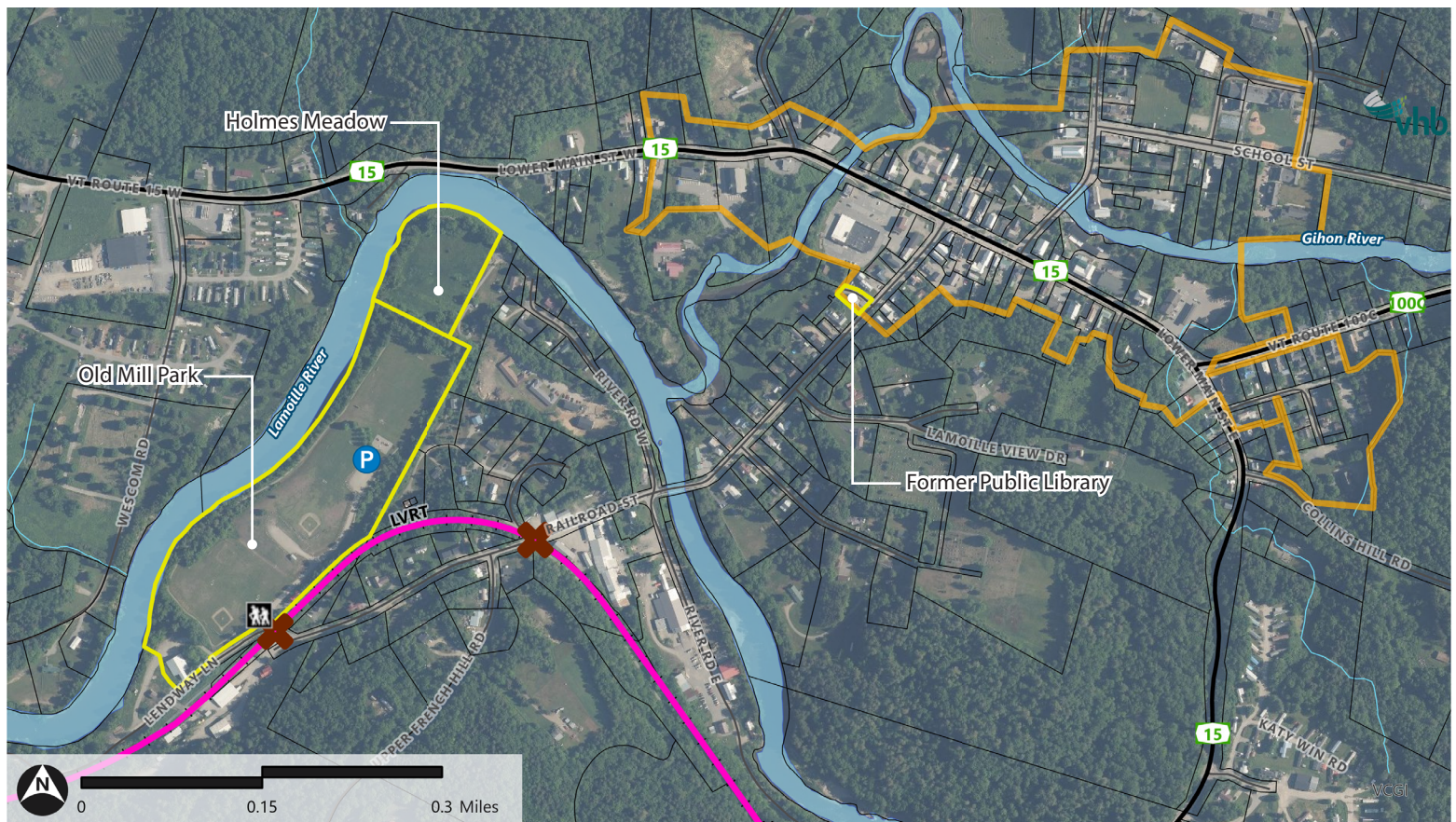
May 22, 2025

6:00 pm



Johnson Municipal Building

293 Lower Main Street West  
Johnson, VT 05656



### Lamoille Valley Rail Trail (LVRT)

- Trailheads
- Parking Facilities
- Crossings
- LVRT Centerline (VTrans)

### Cultural & Historic

- Village Center Boundary (ANR)

### Transportation

- Railroad (VTrans)

### Boundaries

- Parcel Boundary (VCGI)

