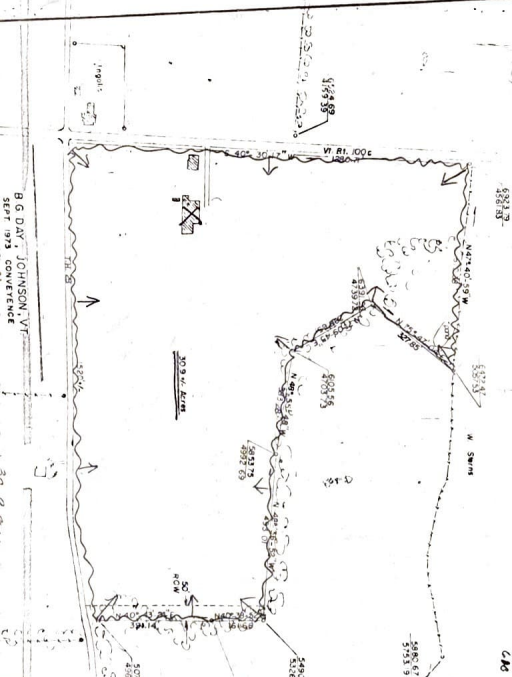


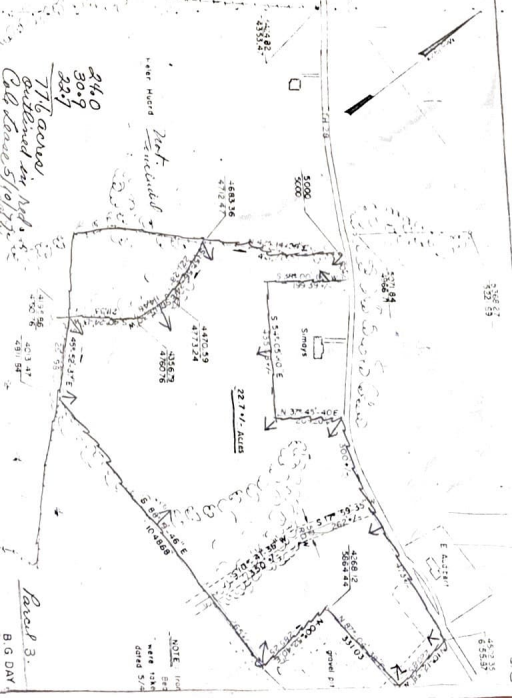
B.G. DAY, JOHNSON, VT
 SEPT 1973 CONVEYANCE
 (PARCELS - 1)

24 Acres
 by W.D. Lawrence, P.E., Barre, Vermont
 Drawn by: T. Toel
 9/3/73



B.G. DAY, JOHNSON, VT
 SEPT 1973 CONVEYANCE

30 Acres
 by W.D. Lawrence, P.E., Barre, Vermont
 Drawn by: T. Toel
 9/3/73



B.G. DAY, JOHNSON, VT
 SEPT 1973 CONVEYANCE

24.0
 30.9
 22.7
 77.6 acres
 outlined in red
 Col. Lawrence 5/10/77

Parcel 3
 B.G. DAY

NOTE:
 Iron
 B.M.
 were taken
 dated 5/74