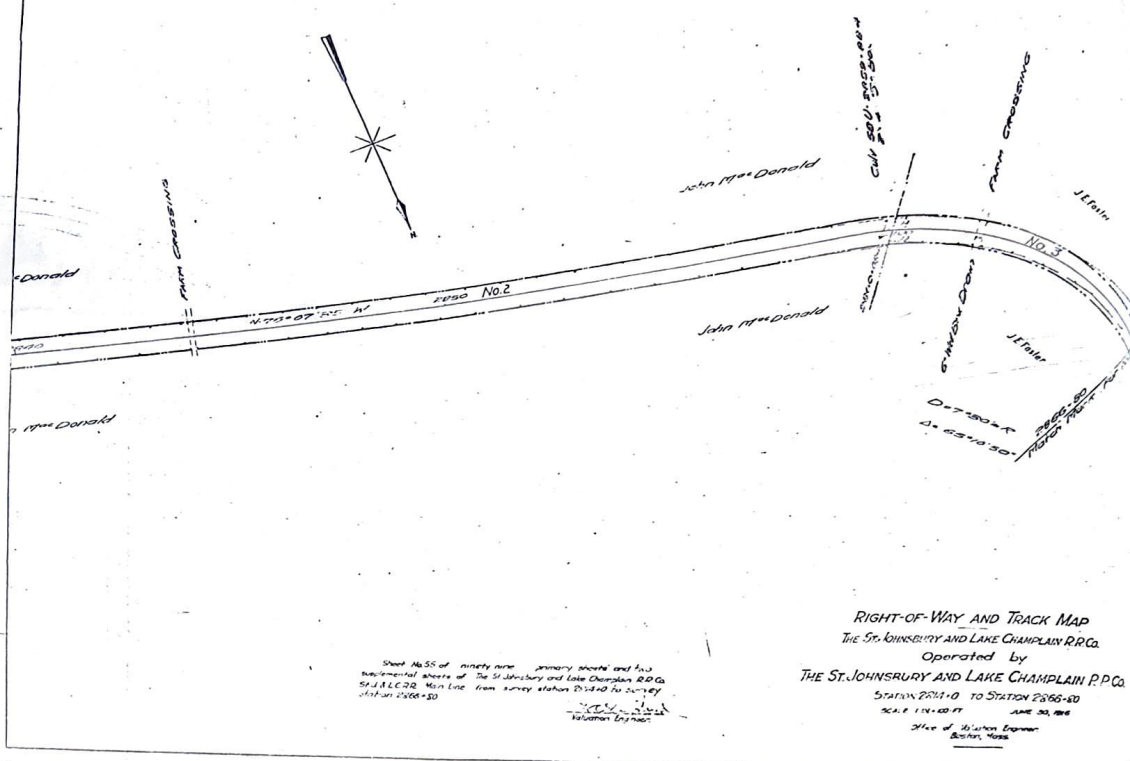


| Project                                   | Date          | Scale     | Author       |
|---|---------------|-----------|--------------|
| St. Johnsbury and Lake Champlain R.R. Co. | June 20, 1966 | 1" = 100' | J. H. Wilson |

TON, VT



**RIGHT-OF-WAY AND TRACK MAP**  
**THE ST. JOHNSBURY AND LAKE CHAMPLAIN R.R. CO.**  
 Operated by  
**THE ST. JOHNsbURY AND LAKE CHAMPLAIN P.P. CO.**  
 STATION 2201+0 TO STATION 2265+00  
 SCALE 1" = 100' FT. JUNE 20, 1966  
 J. H. Wilson  
 Office of Station Engineer  
 Burlington, Vermont

Sheet No. 55 of ninety nine primary sheets and two supplemental sheets of The St. Johnsbury and Lake Champlain R.R. Co. Single Track Main Line from survey station 2142+0 to survey station 2265+00

JOHNSBURY

