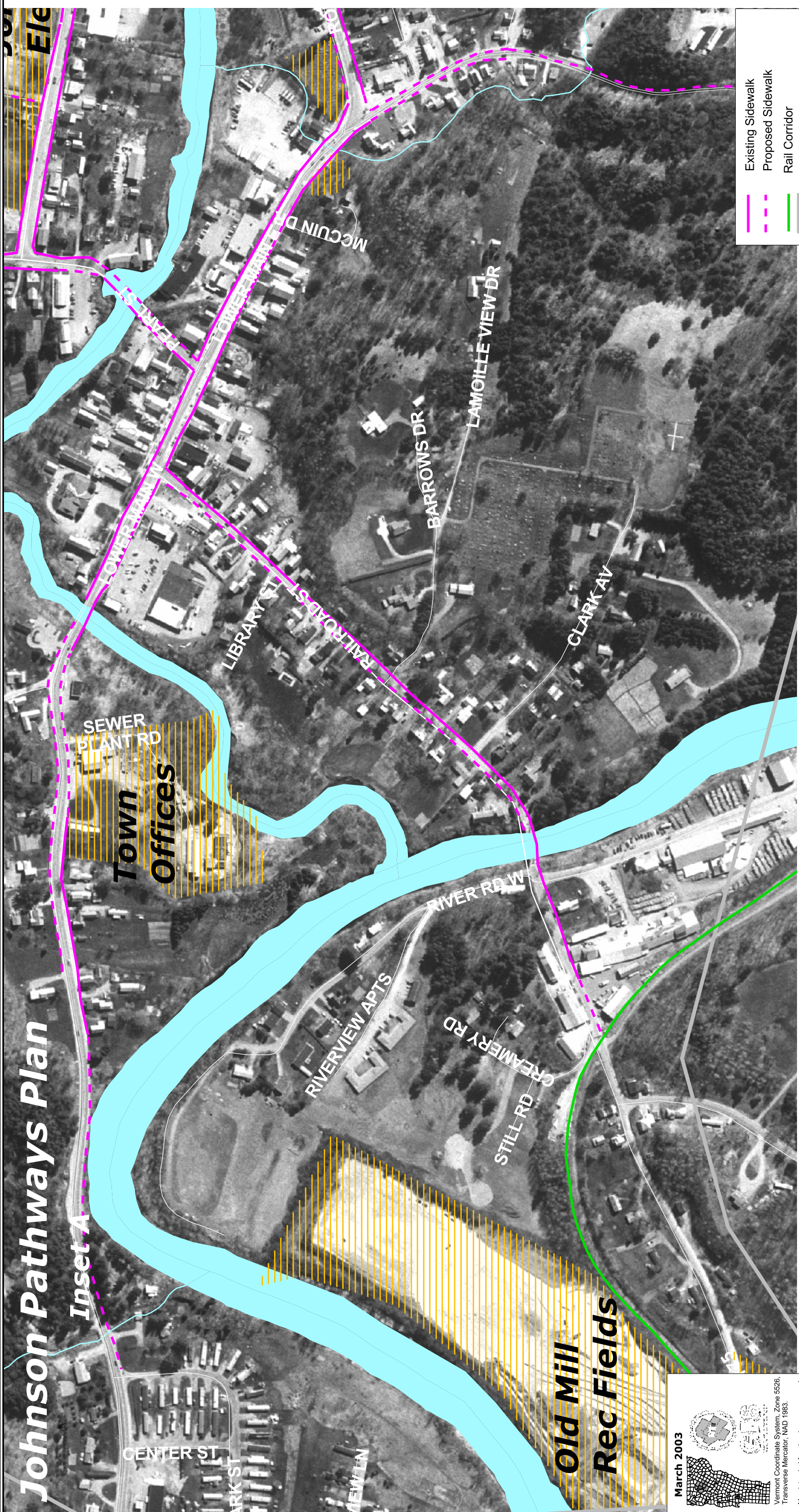


Johnson Pathways Plan

Inset A



	Existing Sidewalk
	Proposed Sidewalk
	Rail Corridor
	Village Boundary
	State
	Town or Village of Johnson
	River/Stream
	Pond/Lake



March 2003

Vermont
 State
 Planning
 Office

SOURCE: POLITICAL BOUNDARIES: 1:24000 USGS Quadrangles, VCGI, 1991.
 ROADS: 1:5000 E-911 Data, 2002.
 SURFACE WATER: On-screen digitized from 1:5000 digital orthophotos using the Vermont State Planning Office's digitization protocol. Additional photography as additional source material, VCGI for WPD-USGS, 2001.

Map intended for planning purposes only.
 For further information, please contact:
 Karyl Fuller
 Lamoille County Planning Commission
 P.O. Box 1009, 43 Portland Street
 Morrisville, Vermont 05661-1009
 802.888.4848 / 802.888.6936
 kfuller.lcp@psnhitt.com
 www.lamoillecountypartnership.org