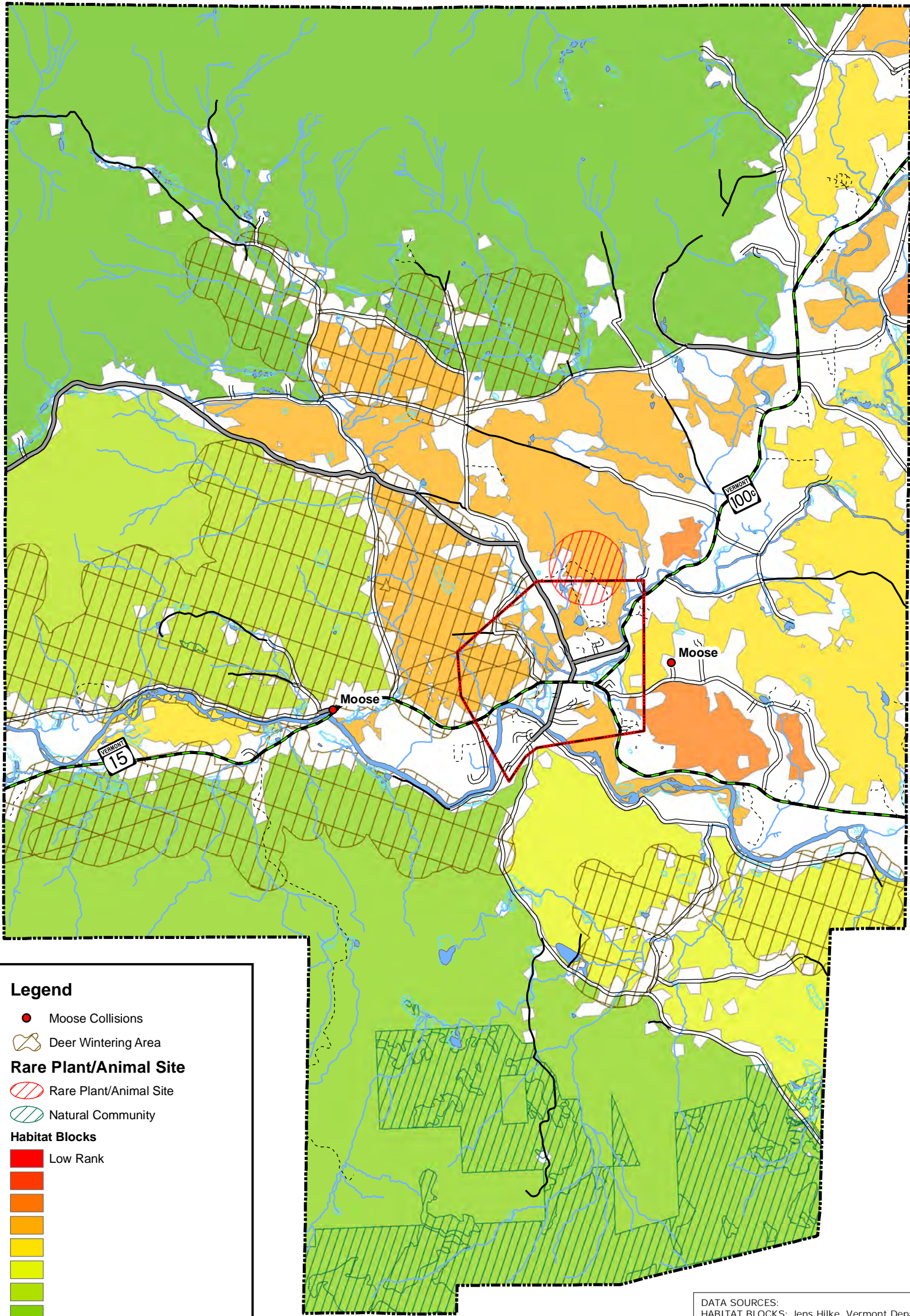


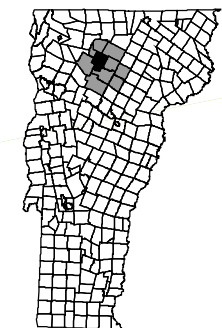
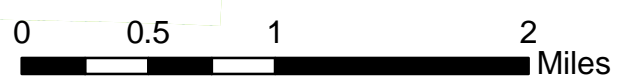
Johnson, Vermont Town Plan Significant Habitat Map



Legend

- Moose Collisions
- 🦌 Deer Wintering Area
- Rare Plant/Animal Site**
- 🦌 Rare Plant/Animal Site
- 🌿 Natural Community
- Habitat Blocks**
- 🔴 Low Rank
- 🟠
- 🟡
- 🟢
- 🟢 High Rank
- 🌊 Wetland
- 🌊 Lake/Pond
- 🏠 Town Boundary
- 🏠 Village Boundary
- 🌊 Streams
- Roads**
- 🛣️ State Highway
- 🛣️ State Forest Highway
- 🛣️ Class 2 Town Highway
- 🛣️ Class 3 Town Highway
- 🛣️ Class 4 Town Highway
- 🛣️ Public Road, Undetermined Class
- 🛣️ Unknown / Private Road
- 🛣️ Trail

DATA SOURCES:
HABITAT BLOCKS: Jens Hilke, Vermont Department of Fish and Wildlife; Eric Sorenson, Vermont Agency of Natural Resources; Jon Osborne, Vermont Land Trust. Quality ranking based on several weighted factors. For more information, see full report, available at http://www.vcgl.org/commres/vsdp/archive/hilke_osborne_hab_block_connect.pdf.
ROADKILL: VDFW, 2006.
WETLANDS: Vermont Significant Wetlands Inventory, VCGI, 2010.
RARE PLANT/ANIMAL SITES: Rare, Threatened and endangered Species & Significant Communities, 1:24000, Includes 200m buffer. Vermont Fish and Wildlife, 2006.
DEER WINTERING AREAS: 1:24000 and 1:25000, VANR, 2008.
POLITICAL BOUNDARIES: 1:24000 USGS Quadrangles, VCGI, 1991.
ROADS: 1:5000 E-911 Road Data, VCGI, 2015.
SURFACE WATER: On-screen digitized from 1:5000 digital orthophotos using USGS 7 1/2' quadrangles and 1:20000 color infrared aerial photography as additional source material, VCGI for VHD-USGS, 2001.



Lamoille County Planning Commission
 Demars Building, 2nd Floor
 52 Portland Street, P.O. Box 1637
 Morrisville, VT 05661-1009
 802.888.4548 f 802.888.6938
www.lcpcvt.org/ March, 2016

**Transverse Mercator,
 VT State Plane, NAD 1983**

**For planning purposes only.
 Not for regulatory interpretation.**