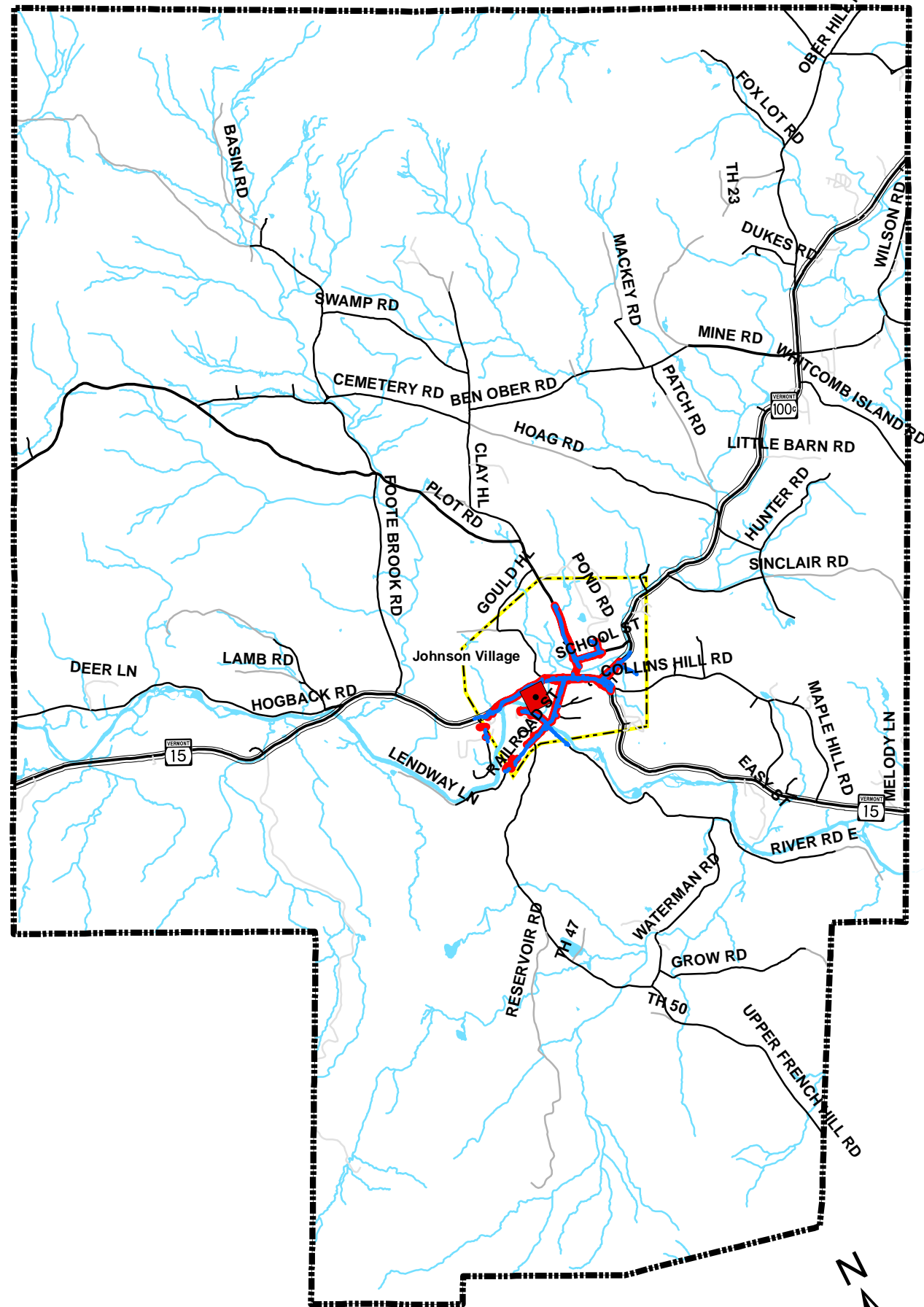
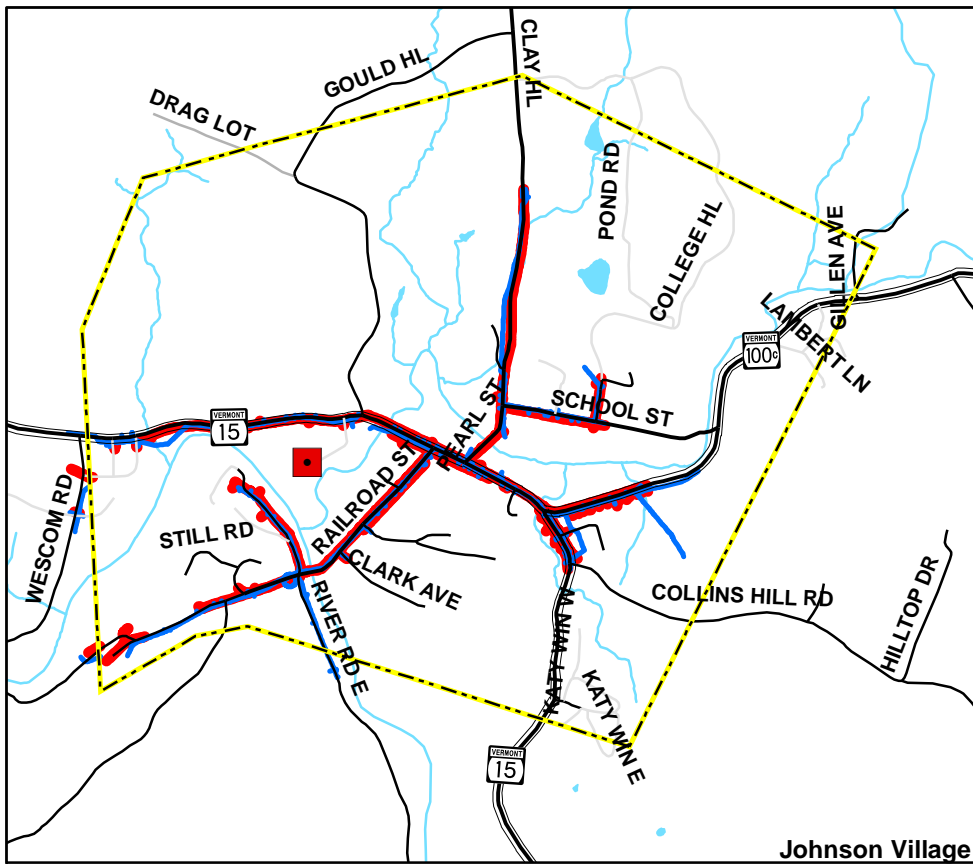
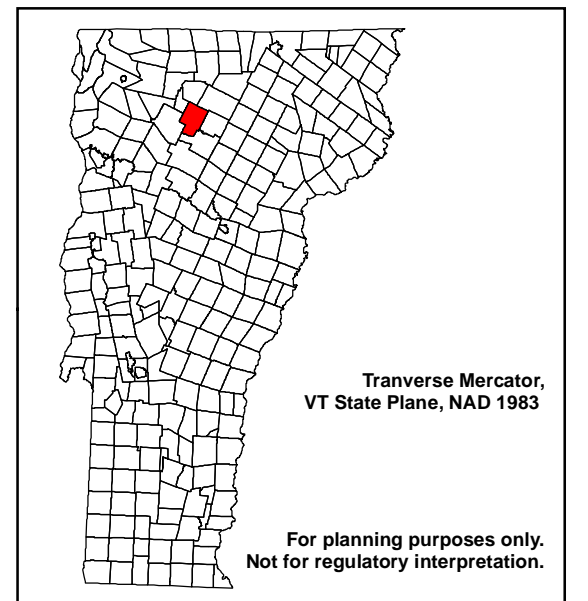


Johnson, Vermont Town Plan Sewer and Water Lines



- Wastewater Treatment Plant
- Waterline
- Sewerline
- State Highway
- Class 2 Road
- Class 3 Road
- Class 4 Road
- Private Road
- Lake
- Stream
- Village Boundary
- Town Boundary

Lamoille County Planning Commission
 Demars Building, 2nd Floor
 52 Portland Street, P.O. Box 1637
 Morrisville, VT 05661-1009
 802.888.4548 f 802.888.6938
 www.lpcvt.org/ March, 2016



DATA SOURCES:
 POLITICAL BOUNDARIES: 1:24000 USGS Quadrangles, VCGI, 1991.
 ROADS: 1:5000 E-911 Road Data, 2014.
 SURFACE WATER: On-screen digitized from 1:5000 digital orthophotos using USGS 7 1/2' quadrangles and 1:20000 color infrared aerial photography as additional source material, VCGI for VHD-USGS, 2001.
 WATER AND SEWER LINES: VCGI, 2011.