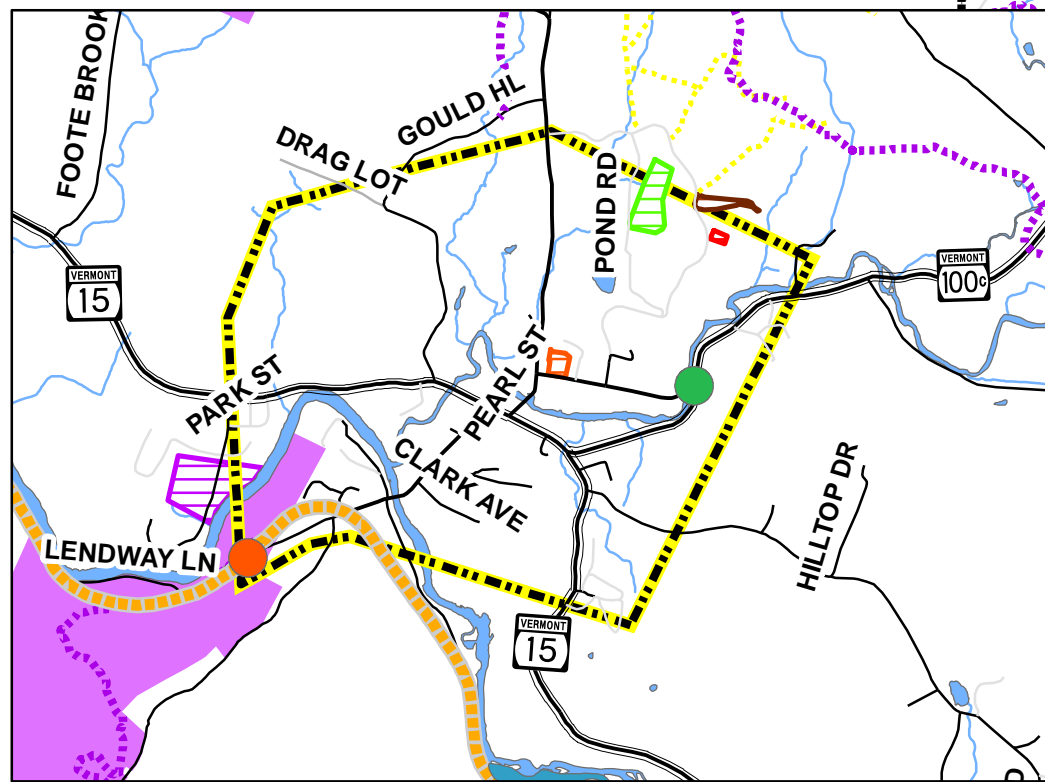
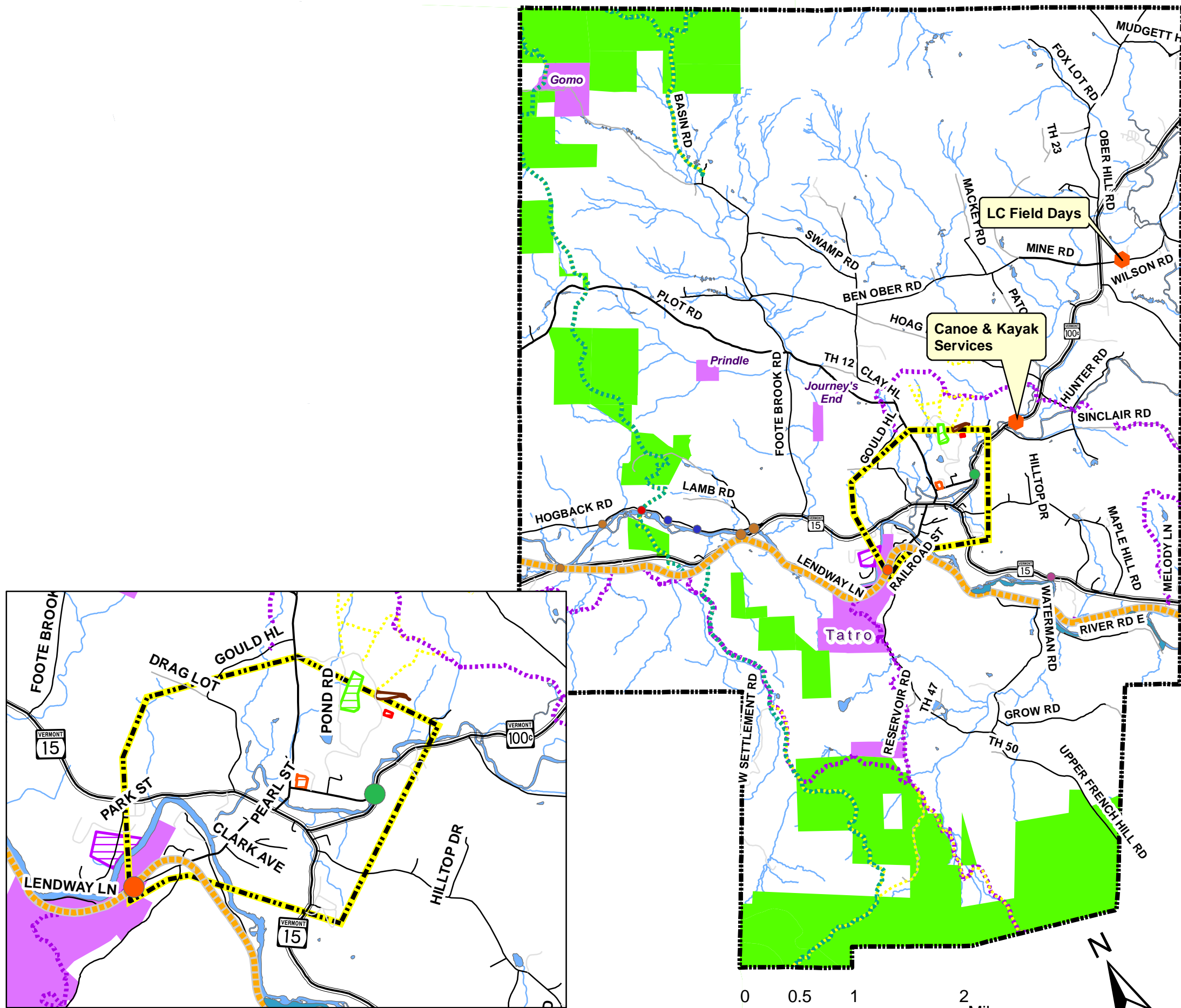
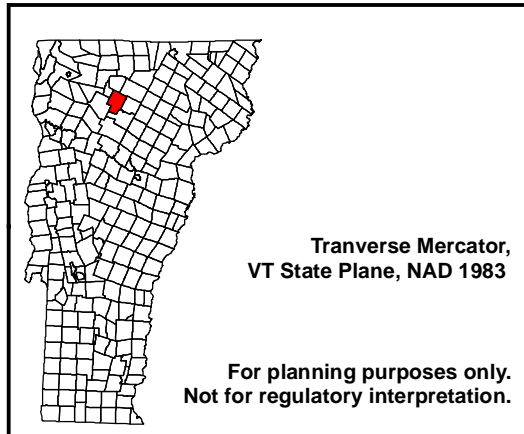


Johnson Town and Village Recreation



- Recreational Access Points**
- parking
 - parking/fishing
 - parking/fishing/boating access
 - parking/fishing/canoe access
 - parking/river overlook
 - recreational area
 - residential camp
 - Athletic Field
 - Recreational Field
 - Tennis Courts
 - Terrain Park
 - River park
 - State Owned
 - Town/Village Owned
 - Town Boundary
 - Village Boundary
 - Lake/Pond
 - Lamolle Valley Rail Trail
 - Long Trail
 - Catamount Trail
 - Local Trail or Path
 - VAST Trail
 - Stream
 - State Highway
 - Class 2 Road
 - Class 3 Road
 - Class 4 Road
 - Private Road

DATA SOURCES:
 POLITICAL BOUNDARIES: 1:24000 USGS Quadrangles, VCGI, 1991.
 ROADS: 1:5000 E-911 Road Data, 2015.
 TRAILS: VCGI, 1991; VAST, 2011; Catamount Trail Association, 2004, Johnson State College, 2004.
 SURFACE WATER: On-screen digitized from 1:5000 digital orthophotos using USGS 7 1/2' quadrangles and 1:20000 color infrared aerial photography as additional source material, VCGI for VHD-USGS, 2001.
 CONSERVED LANDS: UVM Spatial Analyst Lab, 2009.
 TOWN OWNED LANDS: Town of Johnson, 2014.
 RECREATION ACCESS POINTS: LCPC, 2005.



Lamoille County Planning Commission
 Demars Building, 2nd Floor
 52 Portland Street, P.O. Box 1637
 Morrisville, VT 05661-1009
 802.888.4548 f 802.888.6938
www.lcpcvt.org/ March, 2016

Johnson Village

For planning purposes only.
 Not for regulatory interpretation.