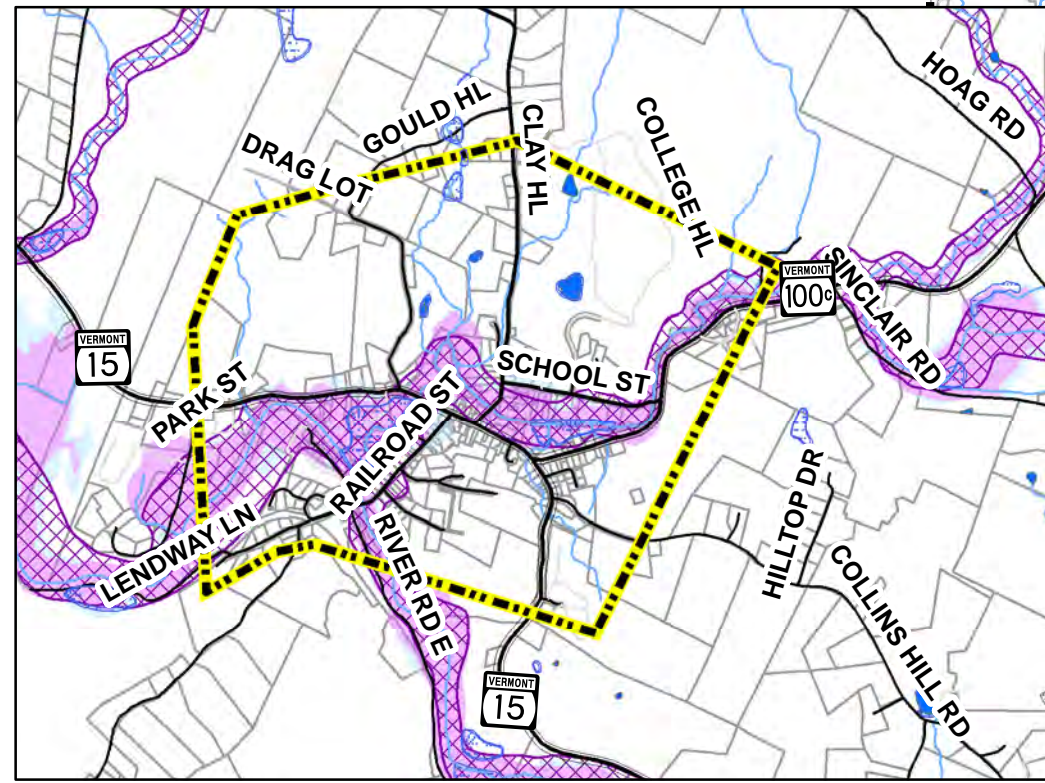
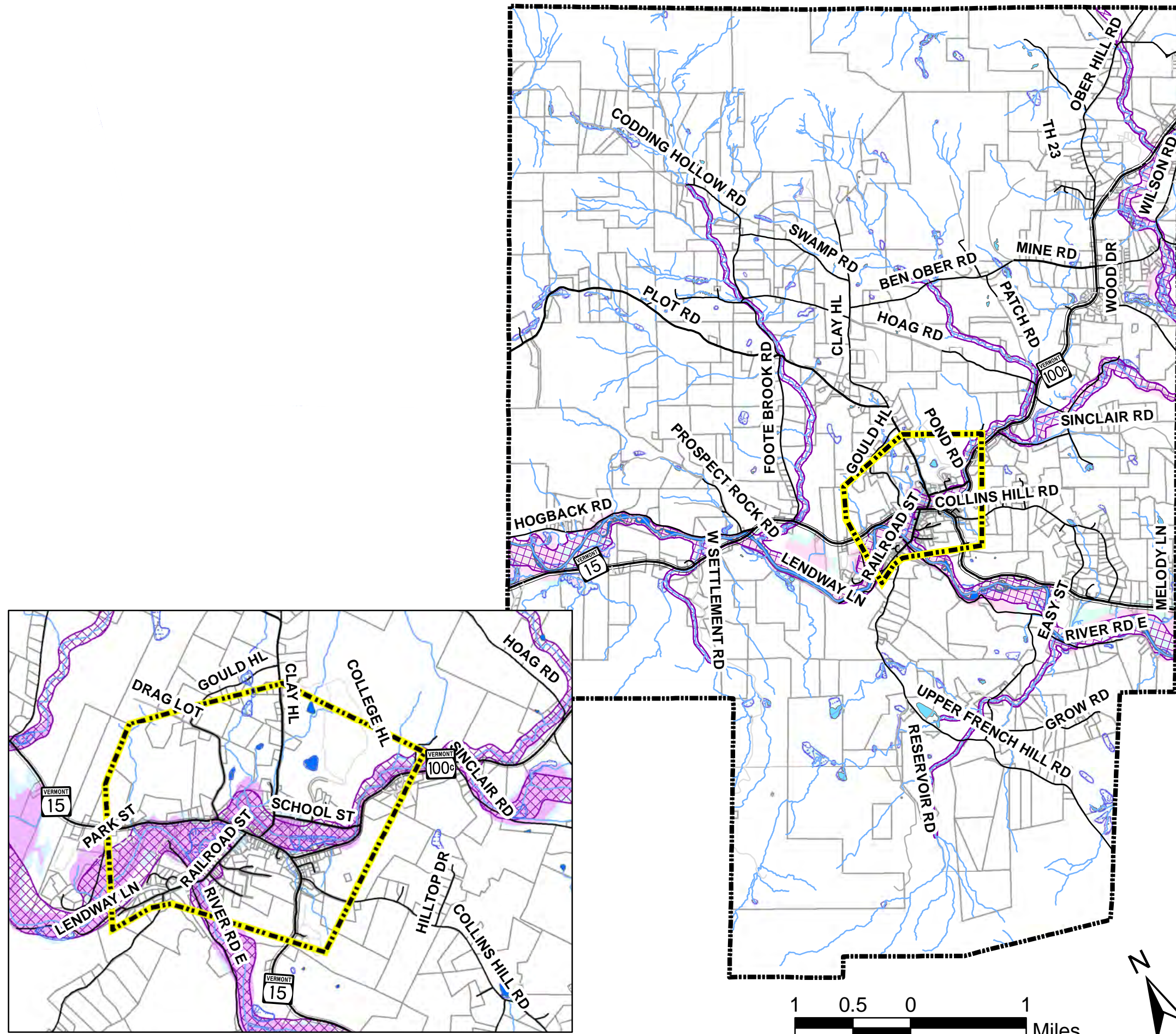


# Johnson, Vermont Town Plan 100 and 500 Year Flood Zones and River Corridors

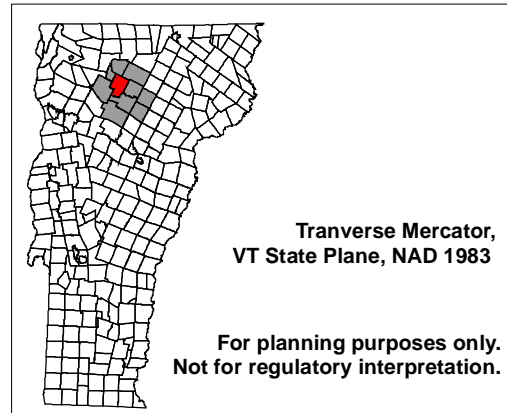
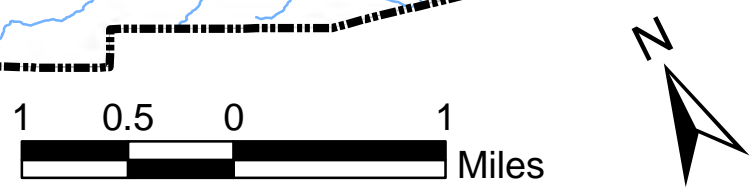


- Statewide River Corridor
- Wetland
- 100-Year Flood Zone
- 500-Year Flood Zone
- Lake
- Parcels
- Village Boundary
- Town Boundary
- Stream

### Roads

- State Highway
- Class 2 Road
- Class 3 Road
- Class 4 Road
- Private Road

DATA SOURCES:  
 POLITICAL BOUNDARIES: 1:24000 USGS Quadrangles, VCGI, 1991.  
 SURFACE WATER: On-screen digitized from 1:5000 digital orthophotos using USGS 7 1/2' quadrangles and 1:20000 color infrared aerial photography as additional source material, VCGI for VHD-USGS, 2001.  
 STATEWIDE RIVER CORRIDOR: ANR Natural Resource Atlas, 2015.  
 WETLANDS: Vermont Significant Wetland Inventory, VCGI, 2010  
 100-YEAR AND 500-YEAR FLOOD PLAIN: Digitized from FEMA Flood Insurance Rate Maps, LCPC, 1983. Floodplains for planning purposes only. Refer to the VANR-DEC, Water Quality Division, Floodplain Coordinator for official floodplain determinations. (802) 241-3759.



Lamoille County Planning Commission  
 Demars Building, 2nd Floor  
 52 Portland Street, P.O. Box 1637  
 Morrisville, VT 05661-1009  
 802.888.4548 f 802.888.6938  
 www.lpcvt.org/ March, 2016

Johnson Village

For planning purposes only.  
 Not for regulatory interpretation.